

## Identification Data



November 19, 2018  
 LAB GROWN DIAMOND  
 Certificate No: 282500054

### Gemprint®

Gemprint is the unique optical fingerprint for positive identification of your lab grown diamond. Register your lab grown diamond at [www.Gemprint.com](http://www.Gemprint.com) and receive insurance discounts up to 10%.



### Laser Inscription:

Actual image of the inscription photographed at magnification greater than 10x. Girdle laser inscribed "LAB GROWN" and "LG282500054"



## The 4Cs Grading Analysis

GCAL 282500054 LAB GROWN DIAMOND\*

**Carat Weight:** 2.04

**Cut:** Ideal  
**Shape:** Round Brilliant  
**Measurements:** 8.15-8.18x5.02mm  
**Optical Brilliance:** Excellent  
**Optical Symmetry:** Excellent  
**Polish:** Excellent  
**External Symmetry:** Excellent  
**Girdle Thickness:** Medium-SI.Thick  
**Culet Size:** None

**Color:** I  
**Fluorescence:** None

**Clarity:** VS1  
**Identifying Characteristic(s):** Crystals/Pinpoints  
**Characteristic Location(s):** Bezel, Table/Throughout Crown

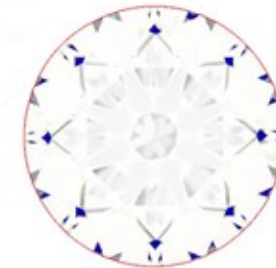
\*Comments: This man-made diamond was grown in a laboratory by the CVD method, and has the same chemical, physical, and optical properties as an earth mined diamond.

**Photomicrographs:**  
 Actual images of the crown (top) and pavilion (bottom) of this diamond photographed at magnifications up to 10x.



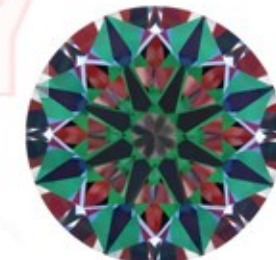
## Light Performance Profile

**Optical Brilliance Analysis:**  
 Brilliance is the overall return of light to the viewer. The brilliance image is a representation of (a) white areas of light return, or brilliance, and (b) dark-blue areas of light loss.



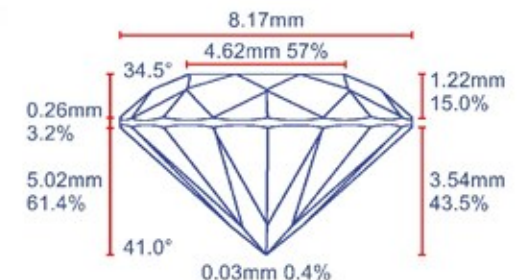
Optical Brilliance  
Excellent

**Optical Symmetry Analysis:**  
 The colored areas of the symmetry image are indications of light handling ability, giving a visual representation of proportions and facet alignment.



Optical Symmetry  
Excellent

**Proportion Diagram:**  
 The proportion diagram illustrates the actual dimensions as recorded by optical scanning technology.



580 Fifth Avenue, New York, NY 10036, T 212.869.8985 F 212.869.2315  
[www.DiamondID.com](http://www.DiamondID.com), [www.GemFacts.com](http://www.GemFacts.com), [www.Gemprint.com](http://www.Gemprint.com)

Guaranteed Lab Grown Diamond Grading Certificate