

Identification Data



April 26, 2018

LAB GROWN DIAMOND
Certificate No: 280960039

Gemprint®

Gemprint is the unique optical fingerprint for positive identification of your lab grown diamond. Register your lab grown diamond at www.Gemprint.com and receive insurance discounts up to 10%.



Laser Inscription:

The illustration depicts enlarged and approximate appearances of the inscriptions. Girdle laser inscribed "LAB GROWN" and "LG280960039"



The 4Cs Grading Analysis

GCAL 280960039

LAB GROWN DIAMOND*

Carat Weight:

1.32

Cut:

Very Good

Shape:

Radiant Brilliant

Measurements:

6.41x6.03x4.14mm

Optical Brilliance:

Excellent

Optical Symmetry:

Very Good

Polish:

Good

External Symmetry:

Very Good

Girdle Thickness:

SI.Thick-Thick

Culet Size:

None

Color:

Fancy Vivid Orangy Yellow

Fluorescence:

Faint

Clarity:

SI1

Identifying Characteristic(s):

Clouds/Feathers

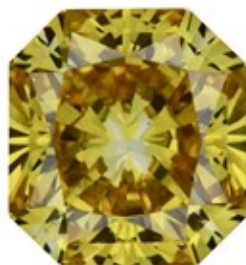
Characteristic Location(s):

Throughout Crown/Pavilion

*Comments: This man-made diamond was grown in a laboratory by the HPHT method, and has the same chemical, physical, and optical properties as a natural earth mined diamond.

Photomicrographs:

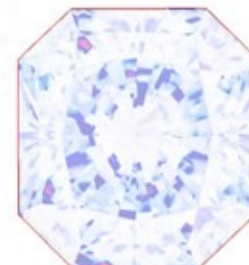
Actual images of the crown (top) and pavilion (bottom) of this diamond photographed at magnifications up to 10x.



Light Performance Profile

Optical Brilliance Analysis:

Brilliance is the overall return of light to the viewer. The brilliance image is a representation of (a) white areas of light return, or brilliance, and (b) dark-blue areas of light loss.



Optical Brilliance
Excellent

Optical Symmetry Analysis:

The colored areas of the symmetry image are indications of light handling ability, giving a visual representation of proportions and facet alignment.



Optical Symmetry
Very Good

Proportion Diagram:

The proportion diagram illustrates the actual dimensions as recorded by optical scanning technology.



GCAL
GEM CERTIFICATION & ASSURANCE LAB
INTEGRITY GUARANTEED™



580 Fifth Avenue, New York, NY 10036, T 212.869.8985 F 212.869.2315
www.DiamondID.com, www.GemFacts.com, www.Gemprint.com

© 2018 GCAL

© 2015 Gem Certification & Assurance Lab, Inc. All Rights Reserved