

## Identification Data



September 10, 2018  
 LAB GROWN DIAMOND  
 Certificate No: 280730010

### Gemprint®

Gemprint is the unique optical fingerprint for positive identification of your lab grown diamond. Register your lab grown diamond at [www.Gemprint.com](http://www.Gemprint.com) and receive insurance discounts up to 10%.



### Laser Inscription:

Actual image of the inscription photographed at magnification greater than 10x. Girdle laser inscribed "LAB GROWN" and "LG280730010"



## The 4Cs Grading Analysis

GCAL 280730010 LAB GROWN DIAMOND\*

**Carat Weight:** 1.68

**Cut:** Very Good  
 Shape: Princess  
 Measurements: 6.72x6.60x4.24mm  
 Optical Brilliance: Excellent  
 Optical Symmetry: Very Good  
 Polish: Good  
 External Symmetry: Good  
 Girdle Thickness: Very Thin-Ex. Thick  
 Culet Size: None

**Color:** Fancy Vivid Orangy Yellow  
**Fluorescence:** None

**Clarity:** VS2  
 Identifying Characteristic(s): Feather, Cloud/Cavity, Chip  
 Characteristic Location(s): Table/Girdle Corners

\*Comments: This man-made diamond was grown in a laboratory by the HPHT method, and has the same chemical, physical, and optical properties as an earth mined diamond.

### Photomicrographs:

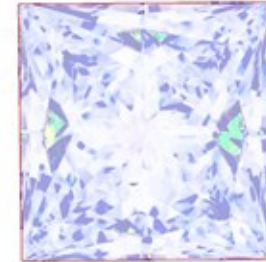
Actual images of the crown (top) and pavilion (bottom) of this diamond photographed at magnifications up to 10x.



## Light Performance Profile

### Optical Brilliance Analysis:

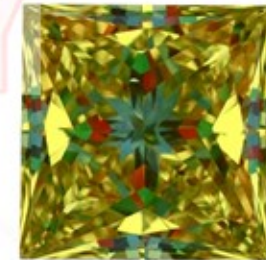
Brilliance is the overall return of light to the viewer. The brilliance image is a representation of (a) white areas of light return, or brilliance, and (b) dark-blue areas of light loss.



Optical Brilliance  
Excellent

### Optical Symmetry Analysis:

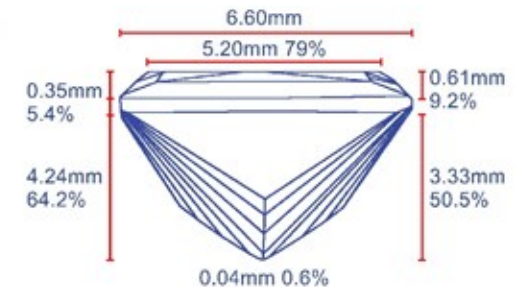
The colored areas of the symmetry image are indications of light handling ability, giving a visual representation of proportions and facet alignment.



Optical Symmetry  
Very Good

### Proportion Diagram:

The proportion diagram illustrates the actual dimensions as recorded by optical scanning technology.



**GCAL**  
 GEM CERTIFICATION & ASSURANCE LAB  
 INTEGRITY GUARANTEED™



580 Fifth Avenue, New York, NY 10036, T 212.869.8985 F 212.869.2315  
[www.DiamondID.com](http://www.DiamondID.com), [www.GemFacts.com](http://www.GemFacts.com), [www.Gemprint.com](http://www.Gemprint.com)

Guaranteed Lab Grown Diamond Grading Certificate