

## Identification Data



December 13, 2017

LAB GROWN DIAMOND  
Certificate No: 273340516

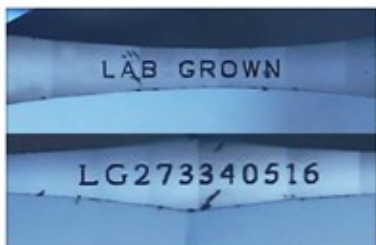
### Gemprint®

Gemprint is the unique optical fingerprint for positive identification of your lab grown diamond. Register your lab grown diamond at [www.Gemprint.com](http://www.Gemprint.com) and receive insurance discounts up to 10%.



### Laser Inscription:

Actual image of the inscription photographed at magnification greater than 10x. Girdle laser inscribed "LAB GROWN" and "LG273340516"



## The 4Cs Grading Analysis

GCAL 273340516

LAB GROWN DIAMOND\*

Carat Weight:

1.24

Cut:

Excellent

Shape:

Round Brilliant

Measurements:

6.95-6.98x4.19mm

Optical Symmetry:

Excellent

Polish:

Very Good

External Symmetry:

Very Good

Girdle Thickness:

Medium-Sl.Thick

Culet Size:

None

Color:

Fancy Deep Greenish Blue

Fluorescence:

None

Clarity:

VS1

Identifying Characteristic(s):

Cloud/Feathers

Characteristic Location(s):

Upper Girdle/Lower Girdle

\*Comments: This man-made diamond was grown in a laboratory by the CVD method, and has the same chemical, physical, and optical properties as a natural earth mined diamond. Additional post growth processes have produced the color.

### Photomicrographs:

Actual images of the crown (top) and pavilion (bottom) of this diamond photographed at magnifications up to 10x.



## Light Performance Profile

### Optical Symmetry Analysis:

The colored areas of the symmetry image are indications of light handling ability, giving a visual representation of proportions and facet alignment.



Optical Symmetry  
Excellent

### Proportion Diagram:

The proportion diagram illustrates the actual dimensions as recorded by optical scanning technology.



**GCAL**  
GEM CERTIFICATION & ASSURANCE LAB  
INTEGRITY GUARANTEED™



580 Fifth Avenue, New York, NY 10036, T 212.869.8985 F 212.869.2315  
[www.DiamondID.com](http://www.DiamondID.com), [www.GemFacts.com](http://www.GemFacts.com), [www.Gemprint.com](http://www.Gemprint.com)

© 2017 GCAL

© 2015 Gem Certification & Assurance Lab, Inc. All Rights Reserved