

## Identification Data



December 12, 2017

LAB GROWN DIAMOND  
Certificate No: 273340409

### Gemprint

Gemprint is the unique optical fingerprint for positive identification of your lab grown diamond. Register your lab grown diamond at [www.Gemprint.com](http://www.Gemprint.com) and receive insurance discounts up to 10%.



### Laser Inscription:

Actual image of the inscription photographed at magnification greater than 10x. Girdle laser inscribed "LAB GROWN" and "LG273340409"



## The 4Cs Grading Analysis

GCAL 273340409

LAB GROWN DIAMOND\*

**Carat Weight:**

1.03

**Cut:**

Shape:  
Measurements:  
Hearts:  
Arrows:  
Optical Brilliance:  
Optical Symmetry:  
Polish:  
External Symmetry:  
Girdle Thickness:  
Culet Size:

Excellent  
Round Brilliant  
6.49-6.51x4.00mm  
Excellent  
Excellent  
Excellent  
Excellent  
Very Good  
Very Good  
Medium  
None

**Color:**

Fluorescence:

I  
None

**Clarity:**

Identifying Characteristic(s):  
Characteristic Location(s):

S11  
Feathers  
Upper Girdle, Upper Girdle-Pavilion,  
Pavilion

\*Comments: This man-made diamond was grown in a laboratory by the CVD method, and has the same chemical, physical, and optical properties as a natural earth mined diamond.

### Photomicrographs:

Actual images of the crown (top) and pavilion (bottom) of this diamond photographed at magnifications up to 10x.



## Light Performance Profile

### Hearts and Arrows:

Precision faceting is visualized as Hearts and Arrows when brilliant cut stones are viewed in specific lighting conditions. Each pattern is the result of facet placement and alignment.



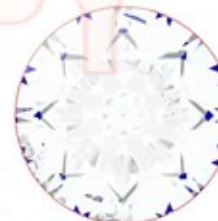
Hearts  
Excellent



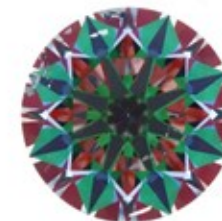
Arrows  
Excellent

### Optical Light Performance:

A direct assessment of a diamond's light handling ability via actual photographs. Brilliance is the overall return of light to the viewer. The brilliance image shows the light return (white areas) and light loss (dark blue areas). The colored pattern of the symmetry image is a visual representation of the facet alignment.



Optical Brilliance  
Excellent



Optical Symmetry  
Excellent

### Proportion Diagram:

The proportion diagram illustrates the actual dimensions as recorded by optical scanning technology.



**GCAL**  
GEM CERTIFICATION & ASSURANCE LAB  
INTEGRITY GUARANTEED™



580 Fifth Avenue, New York, NY 10036, T 212.869.8985 F 212.869.2315  
[www.DiamondID.com](http://www.DiamondID.com), [www.GemFacts.com](http://www.GemFacts.com), [www.Gemprint.com](http://www.Gemprint.com)