

Identification Data



October 16, 2017

LAB GROWN DIAMOND

Certificate No: 272790023

Gemprint

Gemprint is the unique optical fingerprint for positive identification of your lab grown diamond. Register your lab grown diamond at www.Gemprint.com and receive insurance discounts up to 10%.



Laser Inscription:

Actual image of the inscription photographed at magnification greater than 10x. Girdle laser inscribed "LAB GROWN" and "LG272790023"



The 4Cs Grading Analysis

GCAL 272790023

LAB GROWN DIAMOND*

Carat Weight:

2.00

Cut:

Excellent

Shape:

Round Brilliant

Measurements:

8.15-8.19x4.86mm

Optical Brilliance:

Excellent

Optical Symmetry:

Excellent

Polish:

Very Good

External Symmetry:

Excellent

Girdle Thickness:

Medium-Sl.Thick

Culet Size:

None

Color:

I

Fluorescence:

None

Clarity:

VS1

Identifying Characteristic(s):

Cavity/Cloud

Characteristic Location(s):

Pavilion Girdle/Upper Girdle

*Comments: This man-made diamond was grown in a laboratory by the CVD method, and has the same chemical, physical, and optical properties as a natural earth mined diamond.

Photomicrographs:

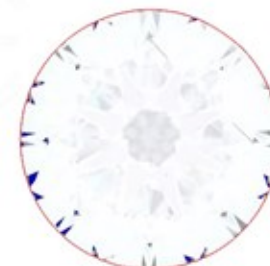
Actual images of the crown (top) and pavilion (bottom) of this diamond photographed at magnifications up to 10x.



Light Performance Profile

Optical Brilliance Analysis:

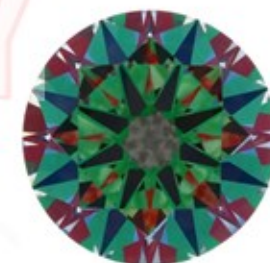
Brilliance is the overall return of light to the viewer. The brilliance image is a representation of (a) white areas of light return, or brilliance, and (b) dark-blue areas of light loss.



Optical Brilliance
Excellent

Optical Symmetry Analysis:

The colored areas of the symmetry image are indications of light handling ability, giving a visual representation of proportions and facet alignment.



Optical Symmetry
Excellent

Proportion Diagram:

The proportion diagram illustrates the actual dimensions as recorded by optical scanning technology.



GCAL
GEM CERTIFICATION & ASSURANCE LAB
INTEGRITY GUARANTEED™



580 Fifth Avenue, New York, NY 10036, T 212.869.8985 F 212.869.2315
www.DiamondID.com, www.GemFacts.com, www.Gemprint.com

© 2017 GCAL

TOP: 8.17mm, LENGTH: 4.99mm, WIDTH: 1.03mm, DEPTH: 3.52mm, TABLE: 8.17mm, GIRDLE: 0.30mm, CULET: 0.03mm, POLISH: VERY GOOD, EXTERNAL SYMMETRY: EXCELLENT, OPTICAL SYMMETRY: EXCELLENT, OPTICAL BRILLIANCE: EXCELLENT, CLARITY: VS1, COLOR: I, FLUORESCENCE: NONE, CUT: EXCELLENT, SHAPE: ROUND BRILLIANT, MEASUREMENTS: 8.15-8.19x4.86mm, CARAT WEIGHT: 2.00, GIRDLE THICKNESS: MEDIUM-SL. THICK, CULET SIZE: NONE, IDENTIFYING CHARACTERISTIC(S): CAVITY/CLOUD, CHARACTERISTIC LOCATION(S): PAVILION GIRDLE/UPPER GIRDLE, COMMENTS: THIS MAN-MADE DIAMOND WAS GROWN IN A LABORATORY BY THE CVD METHOD, AND HAS THE SAME CHEMICAL, PHYSICAL, AND OPTICAL PROPERTIES AS A NATURAL EARTH MINED DIAMOND.