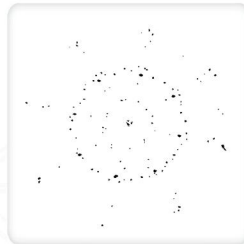
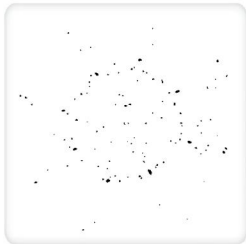


## Identification Data

August 10, 2017 LAB GROWN DIAMONDS\*  
 Certificate Numbers 272130207 / 272130208

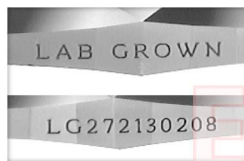


Gemprint is the unique optical fingerprint for positive identification of your lab grown diamond. Register your lab grown diamond at [www.Gemprint.com](http://www.Gemprint.com) and receive insurance discounts up to 10%



## Laser Inscription:

Actual image of the inscription photographed at magnification greater than 10x  
 Girdle laser inscribed "LAB GROWN", "LG272130207", and "LG272130208"



580 Fifth Avenue, New York, NY 10036, T 212.869.8985 F 212.869.2315  
[www.DiamondID.com](http://www.DiamondID.com), [www.GemFacts.com](http://www.GemFacts.com), [www.Gemprint.com](http://www.Gemprint.com)

## The 4Cs Grading Analysis

Certificate Number: 272130207 272130208

Carat Weight: 1.77 1.77

Cut: Ideal Ideal  
 Shape: Round Brilliant Round Brilliant  
 Measurements: 7.75-7.79x4.79 7.74-7.80x4.77  
 Polish: Excellent Excellent  
 External Symmetry: Excellent Excellent  
 Girdle Thickness: Medium Medium  
 Culet Size: None None

Color: H H  
 Fluorescence: None None

Clarity: VS1 VS1

\*Comments: These man-made diamonds were grown in a laboratory by the CVD method, and have the same chemical, physical, and optical properties as a natural earth mined diamond.

These lab grown diamonds are classified as Type IIa, which is the most chemically pure type of diamond, and almost or entirely devoid of impurities. Only 1-2% of natural earth mined diamonds are Type IIa, whereas, colorless and near-colorless CVD lab grown diamonds are usually Type IIa.

## Photomicrographs:

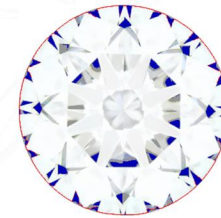
Actual images of the crown (top) and pavilion (bottom) of these diamonds photographed at magnifications up to 10x.



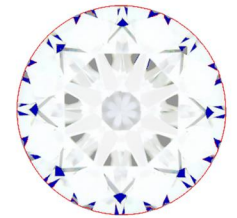
## Light Performance Profile

### Optical Brilliance Analysis:

Brilliance is the overall return of light to the viewer. The brilliance image is a representation of (a) white areas of light return, or brilliance, and (b) dark-blue areas of light loss



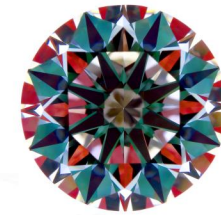
Excellent



Excellent

### Optical Symmetry Analysis:

The colored areas of the symmetry image are indications of light handling ability, giving a visual representation of proportions and facet alignment.



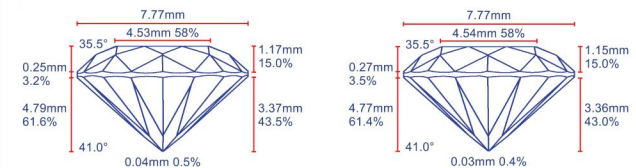
Excellent



Excellent

### Proportion Diagram:

The proportion diagram illustrates the actual dimensions as recorded by laser scanning technology.



Guaranteed Lab Grown Diamond Grading Certificate

ELECTRONIC COPY