

Identification Data



May 24, 2017

LAB GROWN DIAMOND
Certificate No: 271210110

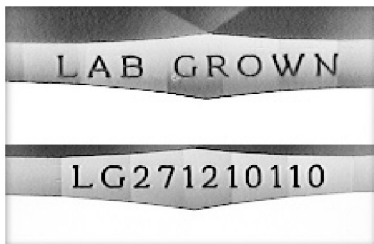
Gemprint®

Gemprint is the unique optical fingerprint for positive identification of your lab grown diamond. Register your lab grown diamond at www.Gemprint.com and receive insurance discounts up to 10%.



Laser Inscription:

Actual image of the inscription photographed at magnification greater than 10x. Girdle laser inscribed "LAB GROWN" and "LG271210110"



The 4Cs Grading Analysis

GCAL 271210110

LAB GROWN DIAMOND*

Carat Weight:

0.70

Cut:
Shape:
Measurements:
Hearts:
Arrows:
Optical Brilliance:
Optical Symmetry:
Polish:
External Symmetry:
Girdle Thickness:
Culet Size:

Excellent
Round Brilliant
5.76-5.83x3.43mm
Excellent
Excellent
Excellent
Excellent
Very Good
Very Good
Medium-Sl.Thick
None

Color:
Fluorescence:

H
None

Clarity:
Identifying Characteristic(s):

VVS2
Internal Growth Characteristics/
External Growth Characteristics
Characteristic Location(s):
Table,Star,Bezel/
Lower Girdle,Pavilion Girdle

*Comments: This man-made diamond was grown in a laboratory by the CVD method, and has the same chemical, physical, and optical properties as a natural earth mined diamond.

Photomicrographs:

Actual images of the crown (top) and pavilion (bottom) of this diamond photographed at magnifications up to 10x.



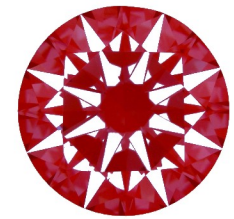
Light Performance Profile

Hearts and Arrows:

Precision faceting is visualized as Hearts and Arrows when brilliant cut stones are viewed in specific lighting conditions. Each pattern is the result of facet placement and alignment.



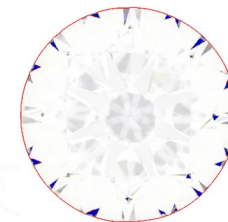
Hearts
Excellent



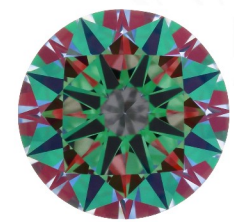
Arrows
Excellent

Optical Light Performance:

A direct assessment of a diamond's light handling ability via actual photographs. Brilliance is the overall return of light to the viewer. The brilliance image shows the light return (white areas) and light loss (dark blue areas). The colored pattern of the symmetry image is a visual representation of the facet alignment.



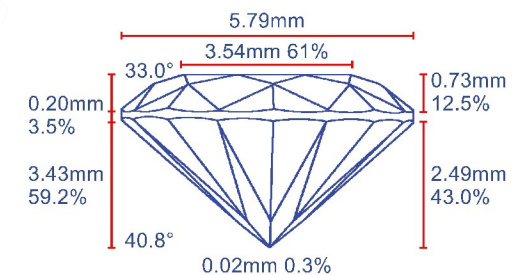
Optical Brilliance
Excellent



Optical Symmetry
Excellent

Proportion Diagram:

The proportion diagram illustrates the actual dimensions as recorded by optical scanning technology.



GCAL
GEM CERTIFICATION & ASSURANCE LAB
INTEGRITY GUARANTEED™



580 Fifth Avenue, New York, NY 10036, T 212.869.8985 F 212.869.2315
www.DiamondID.com, www.GemFacts.com, www.Gemprint.com

Guaranteed Lab Grown Diamond Grading Certificate