

Identification Data

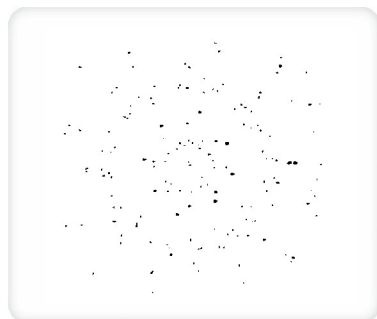


May 11, 2017

LAB GROWN DIAMOND
Certificate No: 271140005

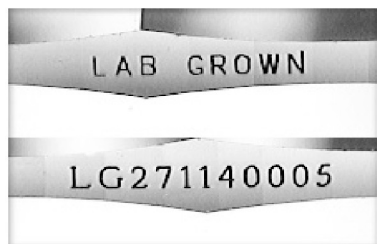


Gemprint is the unique optical fingerprint for positive identification of your lab grown diamond. Register your lab grown diamond at www.Gemprint.com and receive insurance discounts up to 10%.



Laser Inscription:

Actual image of the inscription photographed at magnification greater than 10x. Girdle laser inscribed "LAB GROWN" and "LG271140005"



The 4Cs Grading Analysis

GCAL 271140005

LAB GROWN DIAMOND*

Carat Weight:

0.70

Cut:

Shape:

Measurements:

Optical Brilliance:

Optical Symmetry:

Polish:

External Symmetry:

Girdle Thickness:

Culet Size:

Excellent

Round Brilliant

5.72-5.74x3.45mm

Excellent

Excellent

Very Good

Very Good

SI.Thick

None

Color:

Fluorescence:

G

None

Clarity:

Identifying Characteristic(s): External Growth Characteristic/
Internal Growth Characteristic

Characteristic Location(s): Pavilion,Culet/Throughout Pavilion

VS1

*Comments: This man-made diamond was grown in a laboratory by the CVD method, and has the same chemical, physical, and optical properties as a natural earth mined diamond.

Photomicrographs:

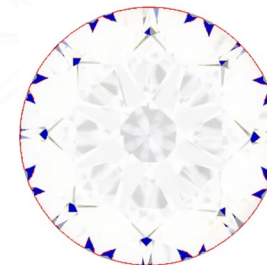
Actual images of the crown (top) and pavilion (bottom) of this diamond photographed at magnifications up to 10x.



Light Performance Profile

Optical Brilliance Analysis:

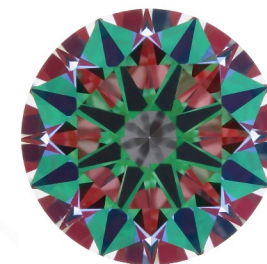
Brilliance is the overall return of light to the viewer. The brilliance image is a representation of (a) white areas of light return, or brilliance, and (b) dark-blue areas of light loss.



Optical Brilliance
Excellent

Optical Symmetry Analysis:

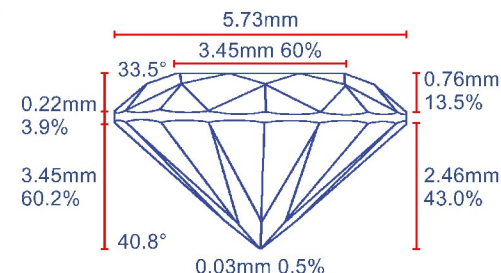
The colored areas of the symmetry image are indications of light handling ability, giving a visual representation of proportions and facet alignment.



Optical Symmetry
Excellent

Proportion Diagram:

The proportion diagram illustrates the actual dimensions as recorded by optical scanning technology.



GCAL
GEM CERTIFICATION & ASSURANCE LAB
INTEGRITY GUARANTEED™



580 Fifth Avenue, New York, NY 10036, T 212.869.8985 F 212.869.2315
www.DiamondID.com, www.GemFacts.com, www.Gemprint.com