

LAB GROWN DIAMONDS

GCAL LG271090672, LG273260100

October 27, 2017

Lab Grown Diamond Solitaire Stud Earrings with a Total Weight of 1.65 ct(s)



The lab grown diamonds described in this certificate were examined and graded prior to mounting. The photo represents the jewelry style, not actual size. To verify this certificate or download a PDF copy, please scan the QR code or go to <https://www.gcalusa.com/c/271090672>



GCAL GEM CERTIFICATION & ASSURANCE LAB
ISO 17025 ACCREDITED FORENSIC LABORATORY

580 Fifth Ave, Flr 27, NYC, NY 10036
T 212-869-8985 GCALUSA.com

© Gem Certification & Assurance Lab, Inc.



ISO/IEC 17025 2017
ANAB L2177-1 Accredited Testing Lab

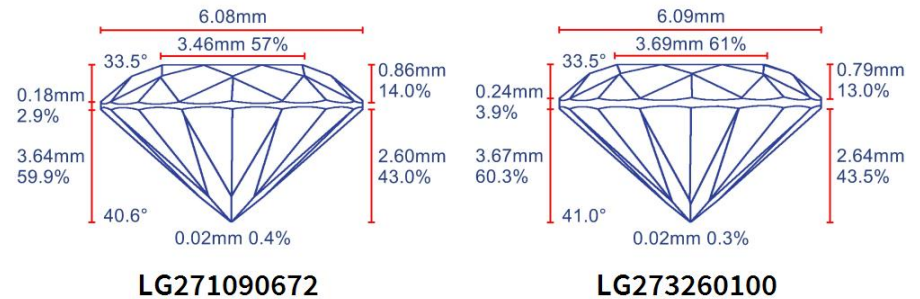
GCAL Certificate No.
Shape and Cutting Style
Measurements
Carat Weight
Color
Clarity
Laser Inscription

Lab Grown Diamond
LG271090672
Round Brilliant
6.07-6.09x3.64mm
0.81ct (s)
H
VS1
LG271090672

GCAL Certificate No.
Shape and Cutting Style
Measurements
Carat Weight
Color
Clarity
Laser Inscription

Lab Grown Diamond
LG273260100
Round Brilliant
6.07-6.11x3.67mm
0.84ct (s)
H
VVS2
LG273260100

Proportion Diagram



These laboratory grown diamonds were created by the CVD (Chemical Vapor Deposition) method, and have the same chemical, physical and optical properties as a mined diamond.