

## Identification Data



March 03, 2017

LAB GROWN DIAMOND  
Certificate No: 270530060

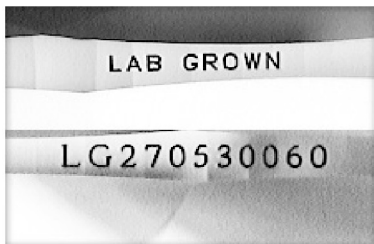


Gemprint is the unique optical fingerprint for positive identification of your lab grown diamond. Register your lab grown diamond at [www.Gemprint.com](http://www.Gemprint.com) and receive insurance discounts up to 10%.



### Laser Inscription:

Actual image of the inscription photographed at magnification greater than 10x. Girdle laser inscribed "LAB GROWN" and "LG270530060"



## The 4Cs Grading Analysis

GCAL 270530060

LAB GROWN DIAMOND\*

**Carat Weight:**

0.52

**Cut:**

Very Good

**Shape:**

Pear Brilliant

**Measurements:**

7.20x4.52x2.73mm

**Optical Brilliance:**

Excellent

**Optical Symmetry:**

Good

**Polish:**

Good

**External Symmetry:**

Very Good

**Girdle Thickness:**

Medium-Thick

**Culet Size:**

None

**Color:**

G

**Fluorescence:**

None

**Clarity:**

VVS2

**Identifying Characteristic(s):** External Growth Characteristics/  
Internal Growth Characteristic

**Characteristic Location(s):** Girdle/Lower Girdle

\*Comments: This man-made diamond was grown in a laboratory by the CVD method, and has the same chemical, physical, and optical properties as a natural earth mined diamond.

### Photomicrographs:

Actual images of the crown (top) and pavilion (bottom) of this diamond photographed at magnifications up to 10x.



## Light Performance Profile

### Optical Brilliance Analysis:

Brilliance is the overall return of light to the viewer. The brilliance image is a representation of (a) white areas of light return, or brilliance, and (b) dark-blue areas of light loss.



Optical Brilliance  
Excellent

### Optical Symmetry Analysis:

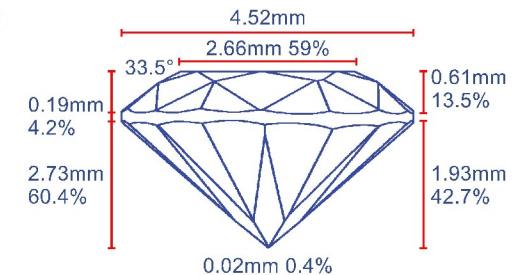
The colored areas of the symmetry image are indications of light handling ability, giving a visual representation of proportions and facet alignment.



Optical Symmetry  
Good

### Proportion Diagram:

The proportion diagram illustrates the actual dimensions as recorded by optical scanning technology.



580 Fifth Avenue, New York, NY 10036, T 212.869.8985 F 212.869.2315  
[www.DiamondID.com](http://www.DiamondID.com), [www.GemFacts.com](http://www.GemFacts.com), [www.Gemprint.com](http://www.Gemprint.com)

Guaranteed Lab Grown Diamond Grading Certificate