

## Identification Data

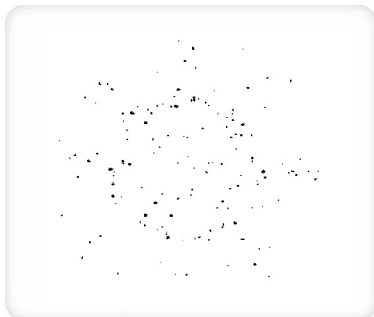


September 12, 2016

LAB GROWN DIAMOND  
Certificate No: 262500003

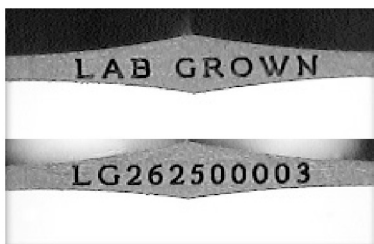


Gemprint is the unique optical fingerprint for positive identification of your lab grown diamond. Register your lab grown diamond at [www.Gemprint.com](http://www.Gemprint.com) and receive insurance discounts up to 10%.



### Laser Inscription:

Actual image of the inscription photographed at magnification greater than 10x. Girdle laser inscribed "LAB GROWN" and "LG262500003"



## The 4Cs Grading Analysis

GCAL 262500003

LAB GROWN DIAMOND\*

**Carat Weight:** 0.53

**Cut:** Very Good  
**Shape:** Round Brilliant  
**Measurements:** 5.21-5.22x3.24mm  
**Optical Brilliance:** Excellent  
**Optical Symmetry:** Excellent  
**Polish:** Good  
**External Symmetry:** Very Good  
**Girdle Thickness:** Thin-Medium  
**Culet Size:** None

**Color:** H  
**Fluorescence:** None

**Clarity:** VS1  
**Identifying Characteristic(s):** Internall Growth Characteristics/  
 External Growth Characteristic  
**Characteristic Location(s):** Table, Bezel/Upper Girdle

\*Comments: This man-made diamond was grown in a laboratory by the CVD method, and has the same chemical, physical, and optical properties as a natural earth mined diamond.

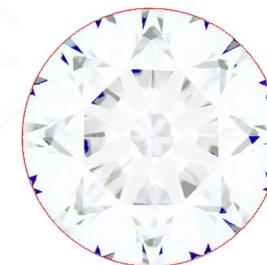
**Photomicrographs:**  
 Actual images of the crown (top) and pavilion (bottom) of this diamond photographed at magnifications up to 10x.



## Light Performance Profile

### Optical Brilliance Analysis:

Brilliance is the overall return of light to the viewer. The brilliance image is a representation of (a) white areas of light return, or brilliance, and (b) dark-blue areas of light loss.



Optical Brilliance  
Excellent

### Optical Symmetry Analysis:

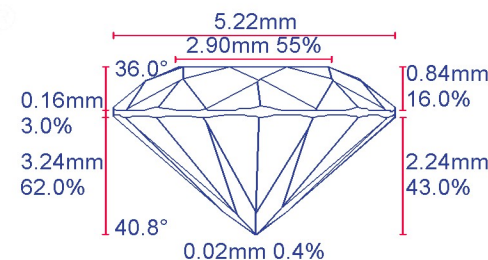
The colored areas of the symmetry image are indications of light handling ability, giving a visual representation of proportions and facet alignment.



Optical Symmetry  
Excellent

### Proportion Diagram:

The proportion diagram illustrates the actual dimensions as recorded by optical scanning technology.



580 Fifth Avenue, New York, NY 10036, T 212.869.8985 F 212.869.2315  
[www.DiamondID.com](http://www.DiamondID.com), [www.GemFacts.com](http://www.GemFacts.com), [www.Gemprint.com](http://www.Gemprint.com)