

## Identification Data

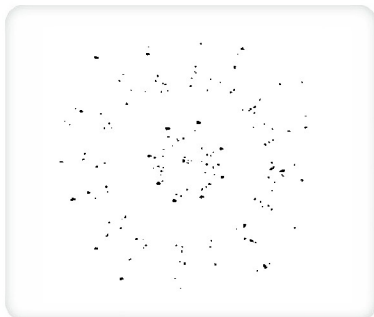


May 16, 2016

LAB GROWN DIAMOND  
Certificate No: 261170080

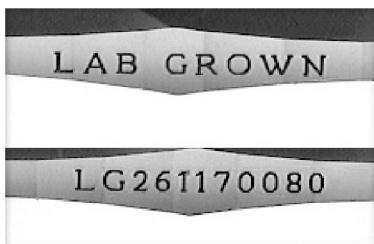
### Gemprint®

Gemprint is the unique optical fingerprint for positive identification of your lab grown diamond. Register your lab grown diamond at [www.Gemprint.com](http://www.Gemprint.com) and receive insurance discounts up to 10%.



### Laser Inscription:

Actual image of the inscription photographed at magnification greater than 10x. Girdle laser inscribed "LAB GROWN" and "LG261170080"



## The 4Cs Grading Analysis

GCAL 261170080

LAB GROWN DIAMOND\*

**Carat Weight:**

1.04

**Cut:**

Excellent

**Shape:**

Round Brilliant

**Measurements:**

6.60-6.66x3.90mm

**Hearts:**

Excellent

**Arrows:**

Excellent

**Optical Brilliance:**

Excellent

**Optical Symmetry:**

Excellent

**Polish:**

Very Good

**External Symmetry:**

Very Good

**Girdle Thickness:**

Medium-Sl.Thick

**Culet Size:**

None

**Color:**

I

**Fluorescence:**

None

**Clarity:**

VS1

**Identifying Characteristic(s):**

External Growth Characteristic/  
Internal Growth Characteristic

**Characteristic Location(s):**

Upper Girdle-Lower Girdle/Table

\*Comments: This man-made diamond was grown in a laboratory by the CVD method, and has the same chemical, physical, and optical properties as a natural earth mined diamond.

### Photomicrographs:

Actual images of the crown (top) and pavilion (bottom) of this diamond photographed at magnifications up to 10x.



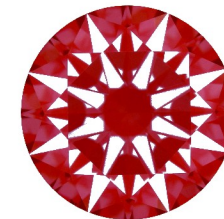
## Light Performance Profile

### Hearts and Arrows:

Precision faceting is visualized as Hearts and Arrows when brilliant cut stones are viewed in specific lighting conditions. Each pattern is the result of facet placement and alignment.



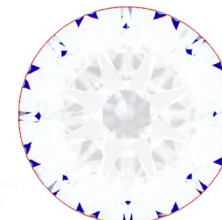
Hearts  
Excellent



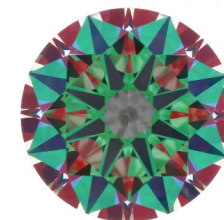
Arrows  
Excellent

### Optical Light Performance:

A direct assessment of a diamond's light handling ability via actual photographs. Brilliance is the overall return of light to the viewer. The brilliance image shows the light return (white areas) and light loss (dark blue areas). The colored pattern of the symmetry image is a visual representation of the facet alignment.



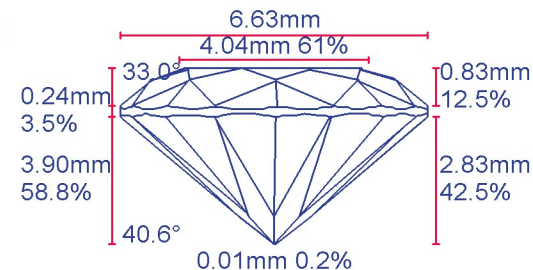
Optical Brilliance  
Excellent



Optical Symmetry  
Excellent

### Proportion Diagram:

The proportion diagram illustrates the actual dimensions as recorded by optical scanning technology.



**GCAL**  
GEM CERTIFICATION & ASSURANCE LAB  
INTEGRITY GUARANTEED™



580 Fifth Avenue, New York, NY 10036, T 212.869.8985 F 212.869.2315  
[www.DiamondID.com](http://www.DiamondID.com), [www.GemFacts.com](http://www.GemFacts.com), [www.Gemprint.com](http://www.Gemprint.com)