

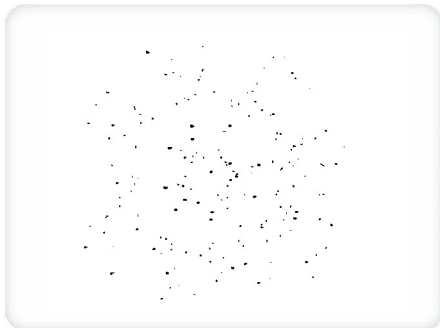
Identification Data

January 18, 2016

LAB GROWN DIAMOND
Certificate Number 260140076

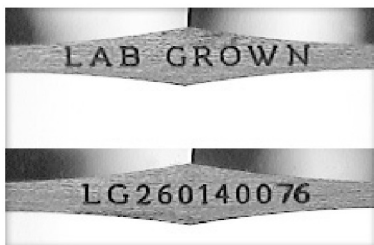


Gemprint is the unique optical fingerprint for positive identification of your lab grown diamond. Register your lab grown diamond at www.Gemprint.com and receive insurance discounts up to 10%.



Laser Inscription:

Actual image of the inscription photographed at magnification greater than 10x
Girdle laser inscribed "LAB GROWN" and "LG260140076"



The 4Cs Grading Analysis

GCAL 260140076

LAB GROWN DIAMOND*

Carat Weight: .55

Cut: Excellent

Shape: Round Brilliant
Measurements: 5.35-5.36x3.20mm
Polish: Very Good
External Symmetry: Very Good
Girdle Thickness: Thin-Medium
Culet Size: None

Color: H

Fluorescence: None

Clarity: SI2

Identifying Characteristic(s): External Growth Characteristic/
Internal Growth Characteristic
Characteristic Location(s): Lower Girdle/Table, Star, Bezel

*Comments: This man-made diamond was grown in a laboratory by the CVD method, and has the same chemical, physical, and optical properties as a natural earth mined diamond.

This lab grown diamond is classified as Type IIa, which is the most chemically pure type of diamond, and almost or entirely devoid of impurities. Only 1-2% of natural earth mined diamonds are Type IIa, whereas, colorless and near-colorless CVD lab grown diamonds are usually Type IIa.

Photomicrographs:

Actual images of the crown (top) and pavilion (bottom) of this diamond photographed at magnifications up to 10x.



Light Performance Profile

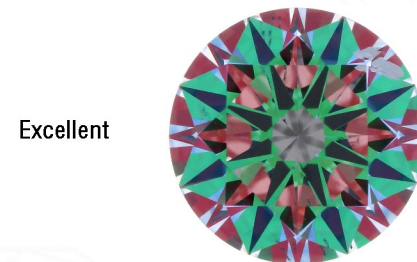
Optical Brilliance Analysis:

Brilliance is the overall return of light to the viewer. The brilliance image is a representation of (a) white areas of light return and (b) dark-blue areas of light loss.



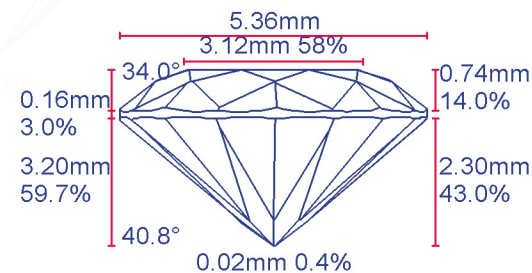
Optical Symmetry Analysis:

The colored areas of the symmetry image are indicators of light handling ability, giving a visual representation of proportions and facet alignment.



Proportion Diagram:

The proportion diagram illustrates the actual dimensions as recorded by optical scanning technology.



GCAL
GEM CERTIFICATION & ASSURANCE LAB
INTEGRITY GUARANTEED™



580 Fifth Avenue, New York, NY 10036, T 212.869.8985 F 212.869.2315
www.DiamondID.com, www.GemFacts.com, www.Gemprint.com