

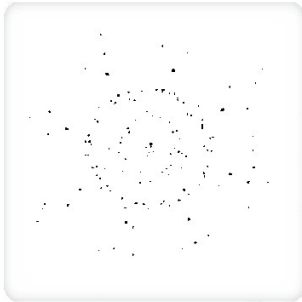
August 19, 2015



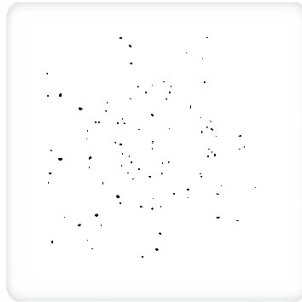
GCAL Jewelry Report No:

J1067168

**Gemprint** is the unique optical fingerprint for positive identification of your lab grown diamond. Protect your investment by registering your lab grown diamond at [www.Gemprint.com](http://www.Gemprint.com) and receive insurance discounts up to 10%



252170100



252170101

\*Comments: These man-made diamonds were grown in a laboratory by the CVD method, and have the same chemical, physical, and optical properties as a natural earth mined diamond. These lab grown diamonds are classified as Type IIa, which is the most chemically pure type of diamond, and almost or entirely devoid of impurities. Only 1-2% of natural earth mined diamonds are Type IIa, whereas, colorless and near-colorless CVD lab grown diamonds are usually Type IIa.



## LAB GROWN DIAMONDS

GCAL No.	252170100
Carat Weight	0.51ct(s)
Shape & Cutting Style	Round Brilliant
Measurements	5.13-5.15x3.19mm
Color/Clarity	Very Light Brown/VS1
Polish/Symmetry	Very Good/Very Good
Comments	Girdle laser inscribed 'LG252170100'

GCAL No.	252170101
Carat Weight	0.54ct(s)
Shape & Cutting Style	Round Brilliant
Measurements	5.17-5.19x3.23mm
Color/Clarity	Light Brown/VS1
Polish/Symmetry	Very Good/Very Good
Comments	Girdle laser inscribed 'LG252170101'

## JEWELRY ITEM DESCRIPTION



The lab grown diamonds are set in 14 karat white gold 4-prong ear studs with plain posts with friction backs. Diamonds graded prior to setting. Finished jewelry not examined.