

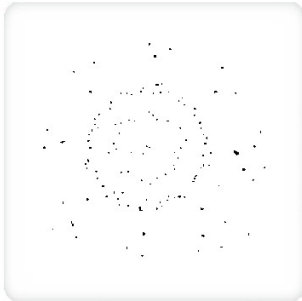
August 18, 2015



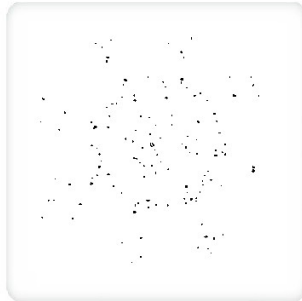
GCAL Jewelry Report No:

J1067134

Gemprint is the unique optical fingerprint for positive identification of your lab grown diamond. Protect your investment by registering your lab grown diamond at www.Gemprint.com and receive insurance discounts up to 10%



252170187



252170188

*Comments: These man-made diamonds were grown in a laboratory by the CVD method, and have the same chemical, physical, and optical properties as a natural earth mined diamond. These lab grown diamonds are classified as Type IIa, which is the most chemically pure type of diamond, and almost or entirely devoid of impurities. Only 1-2% of natural earth mined diamonds are Type IIa, whereas, colorless and near-colorless CVD lab grown diamonds are usually Type IIa.



LAB GROWN DIAMONDS

| | |
|-----------------------|--------------------------------------|
| GCAL No. | 252170187 |
| Carat Weight | 0.35ct(s) |
| Shape & Cutting Style | Round Brilliant |
| Measurements | 4.55-4.59x2.83mm |
| Color/Clarity | Very Light Brown/VS1 |
| Polish/Symmetry | Good/Very Good |
| Comments | Girdle laser inscribed 'LG252170187' |

| | |
|-----------------------|--------------------------------------|
| GCAL No. | 252170188 |
| Carat Weight | 0.36ct(s) |
| Shape & Cutting Style | Round Brilliant |
| Measurements | 4.54-4.57x2.80mm |
| Color/Clarity | Light Brown/VVS2 |
| Polish/Symmetry | Very Good/Very Good |
| Comments | Girdle laser inscribed 'LG252170188' |

JEWELRY ITEM DESCRIPTION



The lab grown diamonds are set in 14 karat white gold 4-prong ear studs with plain posts with friction backs. Diamonds graded prior to setting. Finished jewelry not examined.

580 Fifth Avenue, LL-05, New York, NY 10036
T 212.869.8985 F 212.869.2315

www.DiamondID.com www.GemFacts.com
© 2015 Gem Certification & Assurance Lab, Inc. All Rights Reserved