

LAB GROWN DIAMOND

GCAL LG351142747

May 06, 2025



The fingerprint system for diamonds



ID No. NY02-745862

Gemprint is the unique optical fingerprint of your lab grown diamond. This patented technology is positive, forensic identification. Protect your investment and receive discounts up to 10% off your annual insurance premiums.

Register your diamond at [Gemprint.com](https://www.gemprint.com)

Laser Inscription

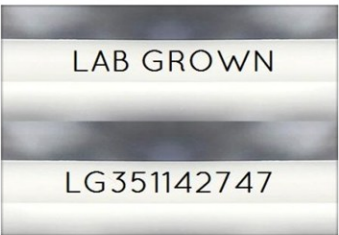
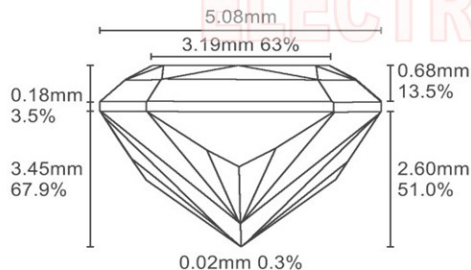


Illustration depicts approx. girdle appearance

Proportion Diagram



GCAL Certificate No. LG351142747

Scan QR code to view details of this lab grown diamond, grading scales, and to download a PDF of this certificate or go to <https://www.gcalusa.com/c/351142747>



4C's GRADING

Carat Weight	1.09
Color	D
Clarity	VS1
Cut	Excellent

Shape and Cutting Style	Radiant Brilliant
Measurements	7.46x5.08x3.45mm
Polish	Excellent
Physical Symmetry	Excellent
Optical Brilliance	Very Good
Optical Symmetry	Good
Table %	63%
Depth %	67.9%
Girdle	Medium
Culet	None
Fluorescence	None
Inscription	"LAB GROWN" & "LG351142747"
Growth Method	HPHT

This laboratory grown diamond was created by the HPHT (High Pressure High Temperature) method, and has the same chemical, physical and optical properties as a mined diamond.

Clarity Characteristics and Locations

Needles	Crown Step, Crown Shoulder-Crown Step
Feathers	Table



The specifications noted in this certificate are accurate within recognized gemological tolerances. We stand behind our grading with a 4Cs Consumer Guarantee. Kindly see additional details, including the limitation of the guarantee, at www.gcalusa.com.

GCAL BY SARINE

GCALUSA.com
T +1 212-869-8985
© GCAL USA LLC

Headquarters:
580 Fifth Ave, Flr. 27,
New York, NY 10036

Laboratories:
New York, USA
Surat, INDIA