

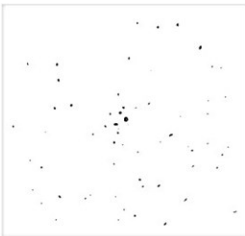
# LAB GROWN DIAMOND

GCAL LG351142474

May 06, 2025



The fingerprint system for diamonds



ID No. NY02-745899

Gemprint is the unique optical fingerprint of your lab grown diamond. This patented technology is positive, forensic identification. Protect your investment and receive discounts up to 10% off your annual insurance premiums.

Register your diamond at [Gemprint.com](https://www.gemprint.com)

## Laser Inscription

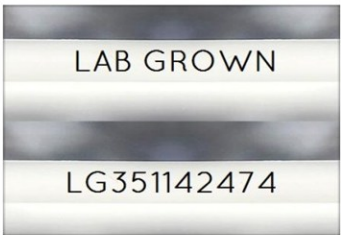
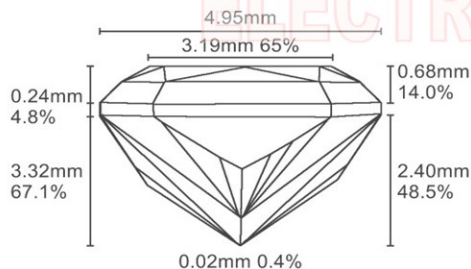


Illustration depicts approx. girdle appearance

## Proportion Diagram



GCAL Certificate No. LG351142474

Scan QR code to view details of this lab grown diamond, grading scales, and to download a PDF of this certificate or go to <https://www.gcalusa.com/c/351142474>



## 4C's GRADING

|              |           |
|--------------|-----------|
| Carat Weight | 1.03      |
| Color        | D         |
| Clarity      | VS2       |
| Cut          | Excellent |

|                         |                             |
|-------------------------|-----------------------------|
| Shape and Cutting Style | Radiant Brilliant           |
| Measurements            | 7.32x4.95x3.32mm            |
| Polish                  | Excellent                   |
| Physical Symmetry       | Excellent                   |
| Optical Brilliance      | Very Good                   |
| Optical Symmetry        | Good                        |
| Table %                 | 65%                         |
| Depth %                 | 67.1%                       |
| Girdle                  | Thick                       |
| Culet                   | None                        |
| Fluorescence            | None                        |
| Inscription             | "LAB GROWN" & "LG351142474" |
| Growth Method           | HPHT                        |

This laboratory grown diamond was created by the HPHT (High Pressure High Temperature) method, and has the same chemical, physical and optical properties as a mined diamond.

Clarity Characteristics and Locations  
Crystals Crown Shoulder, Table



The specifications noted in this certificate are accurate within recognized gemological tolerances. We stand behind our grading with a 4Cs Consumer Guarantee. Kindly see additional details, including the limitation of the guarantee, at [www.gcalusa.com](https://www.gcalusa.com).

### GCAL BY SARINE

GCALUSA.com  
T +1 212-869-8985  
© GCAL USA LLC

Headquarters:  
580 Fifth Ave, Flr. 27,  
New York, NY 10036

Laboratories:  
New York, USA  
Surat, INDIA