

LAB GROWN DIAMOND

GCAL LG351141146

April 30, 2025



The fingerprint system for diamonds



ID No. NY02-745777

Gemprint is the unique optical fingerprint of your lab grown diamond. This patented technology is positive, forensic identification. Protect your investment and receive discounts up to 10% off your annual insurance premiums.

Register your diamond at [Gemprint.com](https://www.gemprint.com)

Laser Inscription

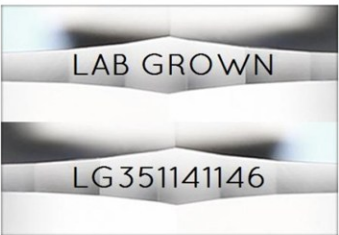
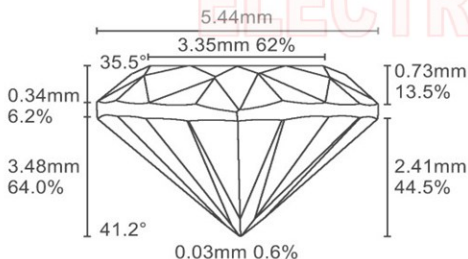


Illustration depicts approx. girdle appearance

Proportion Diagram



GCAL Certificate No. LG351141146

Scan QR code to view details of this lab grown diamond, grading scales, and to download a PDF of this certificate or go to <https://www.gcalusa.com/c/351141146>



4C's GRADING

Carat Weight	1.00
Color	D
Clarity	VVS2
Cut	Very Good

Shape and Cutting Style	Pear Brilliant
Measurements	8.88x5.44x3.48mm
Polish	Good
Physical Symmetry	Good
Optical Brilliance	Very Good
Optical Symmetry	Very Good
Table %	62%
Depth %	64.0%
Girdle	Sl.Thick - Very Thick, Faceted
Culet	None
Fluorescence	None
Inscription	"LAB GROWN" & "LG351141146"
Growth Method	HPHT

This laboratory grown diamond was created by the HPHT (High Pressure High Temperature) method, and has the same chemical, physical and optical properties as a mined diamond.

Clarity Characteristics and Locations

Needles	Upper Girdle-Bezel, Bezel
Pinpoints	Lower Girdle



The specifications noted in this certificate are accurate within recognized gemological tolerances. We stand behind our grading with a 4Cs Consumer Guarantee. Kindly see additional details, including the limitation of the guarantee, at www.gcalusa.com.

GCAL BY SARINE

GCALUSA.com
T +1 212-869-8985
© GCAL USA LLC

Headquarters:
580 Fifth Ave, Flr. 27,
New York, NY 10036

Laboratories:
New York, USA
Surat, INDIA