

# LAB GROWN DIAMOND

GCAL LG351140756

May 01, 2025



The fingerprint system for diamonds



ID No. NY02-745558

Gemprint is the unique optical fingerprint of your lab grown diamond. This patented technology is positive, forensic identification. Protect your investment and receive discounts up to 10% off your annual insurance premiums.

Register your diamond at [Gemprint.com](https://www.gemprint.com)

## Laser Inscription

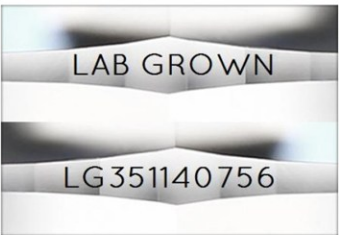


Illustration depicts approx. girdle appearance

## Proportion Diagram



GCAL Certificate No. LG351140756

Scan QR code to view details of this lab grown diamond, grading scales, and to download a PDF of this certificate or go to <https://www.gcalusa.com/c/351140756>



## 4C's GRADING

Carat Weight	1.52
Color	E
Clarity	VS2
Cut	Good

Shape and Cutting Style	Round Cornered Rect Modified Brilliant
Measurements	8.06x5.55x3.71mm
Polish	Very Good
Physical Symmetry	Very Good
Optical Brilliance	Good
Optical Symmetry	Fair
Table %	61%
Depth %	66.9%
Girdle	Thick - Ex. Thick, Faceted
Culet	None
Fluorescence	None
Inscription	"LAB GROWN" & "LG351140756"
Growth Method	HPHT

This laboratory grown diamond was created by the HPHT (High Pressure High Temperature) method, and has the same chemical, physical and optical properties as a mined diamond.

### Clarity Characteristics and Locations

Needles	Bezel-Upper Girdle,Crown
Crystal	Upper Girdle
Cloud	Table



The specifications noted in this certificate are accurate within recognized gemological tolerances. We stand behind our grading with a 4Cs Consumer Guarantee. Kindly see additional details, including the limitation of the guarantee, at [www.gcalusa.com](https://www.gcalusa.com).

### GCAL BY SARINE

GCALUSA.com  
T +1 212-869-8985  
© GCAL USA LLC

Headquarters:  
580 Fifth Ave, Flr. 27,  
New York, NY 10036

Laboratories:  
New York, USA  
Surat, INDIA