

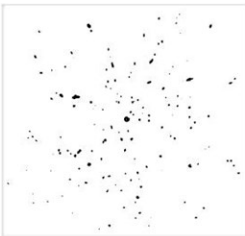
# LAB GROWN DIAMOND

GCAL LG342820314

October 17, 2024



The fingerprint system for diamonds



ID No. NY02-719743

Gemprint is the unique optical fingerprint of your lab grown diamond. This patented technology is positive, forensic identification. Protect your investment and receive discounts up to 10% off your annual insurance premiums.

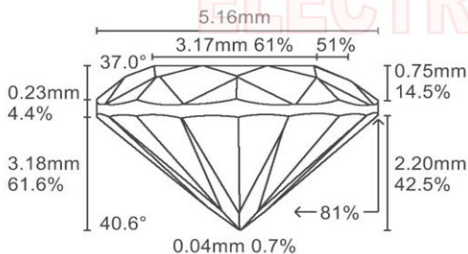
Register your diamond at [Gemprint.com](https://www.gemprint.com)

## Laser Inscription



Illustration depicts approx. girdle appearance

## Proportion Diagram



GCAL Certificate No. LG342820314

Scan QR code to view details of this lab grown diamond, grading scales, and to download a PDF of this certificate or go to <https://www.gcalusa.com/c/342820314>



## 4C's GRADING

Carat Weight	0.54
Color	D
Clarity	VS1
Cut	Good

Shape and Cutting Style	Round Brilliant
Measurements	5.14-5.18x3.18mm
Polish	Good
Physical Symmetry	Good
Optical Brilliance	Excellent
Optical Symmetry	Very Good
Table %	61%
Depth %	61.6%
Girdle	SI.Thick - Very Thick, Faceted
Culet	None
Fluorescence	None
Inscription	"LAB GROWN" & "LG342820314"
Growth Method	HPHT

This laboratory grown diamond was created by the HPHT (High Pressure High Temperature) method, and has the same chemical, physical and optical properties as a mined diamond.

## Clarity Characteristics and Locations

Cloud	Bezel-Upper Girdle
Needle	Bezel
Feathers	Crown



The specifications noted in this certificate are accurate within recognized gemological tolerances. We stand behind our grading with a 4Cs Consumer Guarantee. Kindly see additional details, including the limitation of the guarantee, at [www.gcalusa.com](https://www.gcalusa.com).

## GCAL BY SARINE

GCALUSA.com  
T +1 212-869-8985  
© GCAL USA LLC

Headquarters:  
580 Fifth Ave, Flr. 27,  
New York, NY 10036

Laboratories:  
New York, USA  
Surat, INDIA