

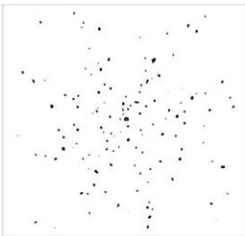
LAB GROWN DIAMOND

GCAL LG342820245

October 17, 2024



The fingerprint system for diamonds



ID No. NY02-719622

Gemprint is the unique optical fingerprint of your lab grown diamond. This patented technology is positive, forensic identification. Protect your investment and receive discounts up to 10% off your annual insurance premiums.

Register your diamond at [Gemprint.com](https://www.gemprint.com)

Laser Inscription

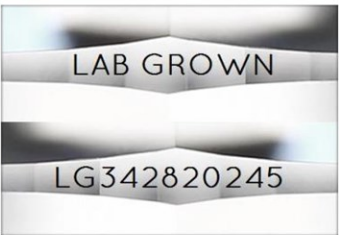
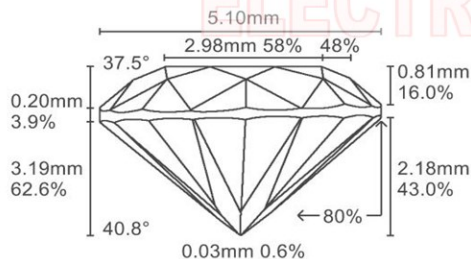


Illustration depicts approx. girdle appearance

Proportion Diagram



GCAL Certificate No. LG342820245

Scan QR code to view details of this lab grown diamond, grading scales, and to download a PDF of this certificate or go to <https://www.gcalusa.com/c/342820245>



4C's GRADING

| | |
|--------------|-----------|
| Carat Weight | 0.52 |
| Color | D |
| Clarity | VS2 |
| Cut | Very Good |

| | |
|-------------------------|-----------------------------|
| Shape and Cutting Style | Round Brilliant |
| Measurements | 5.06-5.14x3.19mm |
| Polish | Good |
| Physical Symmetry | Good |
| Optical Brilliance | Excellent |
| Optical Symmetry | Very Good |
| Table % | 58% |
| Depth % | 62.6% |
| Girdle | Sl.Thick - Thick, Faceted |
| Culet | None |
| Fluorescence | None |
| Inscription | "LAB GROWN" & "LG342820245" |
| Growth Method | HPHT |

This laboratory grown diamond was created by the HPHT (High Pressure High Temperature) method, and has the same chemical, physical and optical properties as a mined diamond.

Clarity Characteristics and Locations

| | |
|---------|--------------|
| Cavity | Lower Girdle |
| Needles | Crown |



The specifications noted in this certificate are accurate within recognized gemological tolerances. We stand behind our grading with a 4Cs Consumer Guarantee. Kindly see additional details, including the limitation of the guarantee, at www.gcalusa.com.

GCAL BY SARINE

| | | |
|-------------------|-------------------------|---------------|
| GCALUSA.com | Headquarters: | Laboratories: |
| T +1 212-869-8985 | 580 Fifth Ave, Flr. 27, | New York, USA |
| © GCAL USA LLC | New York, NY 10036 | Surat, INDIA |