

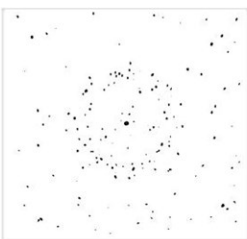
# LAB GROWN DIAMOND

**GCAL LG342820233**

October 17, 2024



The fingerprint system for diamonds



**ID No. NY02-719593**

Gemprint is the unique optical fingerprint of your lab grown diamond. This patented technology is positive, forensic identification. Protect your investment and receive discounts up to 10% off your annual insurance premiums.

**Register your diamond at Gemprint.com**

## Laser Inscription

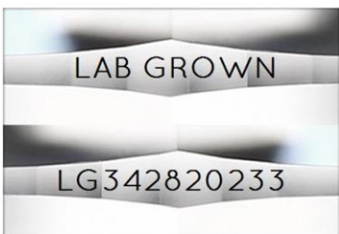
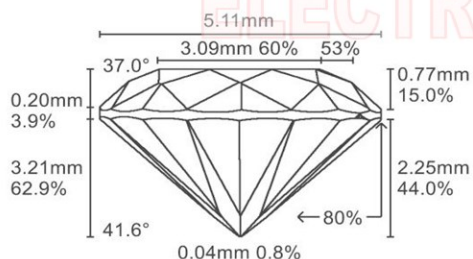


Illustration depicts approx. girdle appearance

## Proportion Diagram



**GCAL Certificate No. LG342820233**

Scan QR code to view details of this lab grown diamond, grading scales, and to download a PDF of this certificate or go to <https://www.gcalusa.com/c/342820233>



## 4C's GRADING

|              |           |
|--------------|-----------|
| Carat Weight | 0.52      |
| Color        | D         |
| Clarity      | VS2       |
| Cut          | Very Good |

|                         |  |
|-------------------------|--|
| Shape and Cutting Style | <b>Round Brilliant</b>                 |
| Measurements            | <b>5.09-5.12x3.21mm</b>                |
| Polish                  | <b>Good</b>                            |
| Physical Symmetry       | <b>Good</b>                            |
| Optical Brilliance      | <b>Excellent</b>                       |
| Optical Symmetry        | <b>Excellent</b>                       |
| Table %                 | <b>60%</b>                             |
| Depth %                 | <b>62.9%</b>                           |
| Girdle                  | <b>Medium - Sl. Thick, Faceted</b>     |
| Culet                   | <b>None</b>                            |
| Fluorescence            | <b>None</b>                            |
| Inscription             | <b>"LAB GROWN" &amp; "LG342820233"</b> |
| Growth Method           | <b>HPHT</b>                            |

This laboratory grown diamond was created by the HPHT (High Pressure High Temperature) method, and has the same chemical, physical and optical properties as a mined diamond.

### Clarity Characteristics and Locations

|         |              |
|---------|--------------|
| Needles | Table, Crown |
| Chip    | Culet        |



The specifications noted in this certificate are accurate within recognized gemological tolerances. We stand behind our grading with a 4Cs Consumer Guarantee. Kindly see additional details, including the limitation of the guarantee, at [www.GCALUSA.com](http://www.GCALUSA.com).

### GCAL BY SARINE

GCALUSA.com  
T +1 212-869-8985  
© GCAL USA LLC

Headquarters:  
580 Fifth Ave, Flr. 27,  
New York, NY 10036

Laboratories:  
New York, USA  
Surat, INDIA