

LAB GROWN DIAMOND

GCAL LG321220074

May 16, 2022

IDENTIFICATION DATA

Gemprint The fingerprint system for diamonds



ID No. NY02-493965

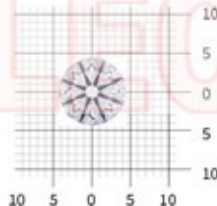
Gemprint is the unique optical fingerprint of your lab grown diamond. This patented technology is positive, forensic identification. Protect your investment and receive discounts up to 10% off your annual insurance premiums. Register your diamond at [Gemprint.com](https://www.gemprint.com)

Laser Inscription



Illustration depicts approx. girdle appearance

Actual Size



8.64 - 8.68 x 5.31 millimeters (mm)

Proportion Diagram

Optical scanning technology measures each facet and angle to produce an accurate, to-scale diagram of this lab grown diamond.



PHOTOMICROGRAPHS



Actual photographs of the crown (top) and pavilion (bottom) of this lab grown diamond photographed at magnifications up to 10x. View hi-res photos at <https://www.gcalusa.com/c/321220074>

Clarity Characteristics and Locations

Crystals	Table, Star, Bezel, Upper Girdle
Cloud	Crown
Feathers	Pavilion

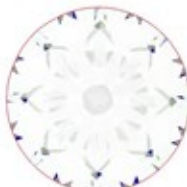
LIGHT PERFORMANCE PROFILE



Hearts & Arrows

Precision faceting is visualized as Hearts and Arrows when brilliant cut stones are viewed in specific lighting conditions. Each pattern is the result of facet placement and alignment.

Excellent



Optical Brilliance

Optical Brilliance is the overall return of white light to the viewer. It is measured to the thousandth decimal place and is represented in this image. The white areas indicate light return / brilliance, and the dark blue areas indicate light loss.

Excellent



Optical Symmetry

Optical Symmetry is visualized in this photograph of your lab grown diamond taken in a specific colored lighting environment. The evenness of the pattern illustrates the precision and uniformity of facet shapes and alignment.

Excellent

GCAL Certificate No. LG321220074

Scan QR code to view photos of this lab grown diamond, grading scales, and to download a PDF of this certificate or go to <https://www.gcalusa.com/c/321220074>



4C's GRADING

Carat Weight	2.44
Color	H
Clarity	VS2
Cut	Ideal

Shape and Cutting Style	Round Brilliant
Measurements	8.64-8.68x5.31
Polish	Excellent
Physical Symmetry	Excellent
Hearts & Arrows	Excellent
Optical Brilliance	Excellent
Optical Symmetry	Excellent
Table %	57%
Depth %	61.3%
Girdle	Medium to Sl.Thick, Faceted
Culet	None
Fluorescence	None
Inscription	"LAB GROWN" & "LG321220074"
Growth Method	CVD

This laboratory grown diamond was created by the CVD (Chemical Vapor Deposition) method, and has the same chemical, physical and optical properties as a mined diamond.

ONE LOCATION. ONE STANDARD. GRADED IN THE USA

Gem Certification & Assurance Lab has examined this lab grown diamond and certifies that the specifications noted in this document are accurate within recognized gemological tolerances. GCAL is an independent third-party and stands behind our grading with a 4Cs Consumer Guarantee. The guarantee, grading scales and all images unique to this lab grown diamond are available at [GCALUSA.com](https://www.gcalusa.com).



Gem Certification & Assurance Lab, Inc.
ISO 17025 Accredited Forensic Laboratory

580 Fifth Ave, Flr 27
New York, NY 10036
T 212-869-8985
[GCALUSA.com](https://www.gcalusa.com)



ISO/IEC 17025:2017
ANAB L2177-1 Accredited Testing Lab