

## Identification Data



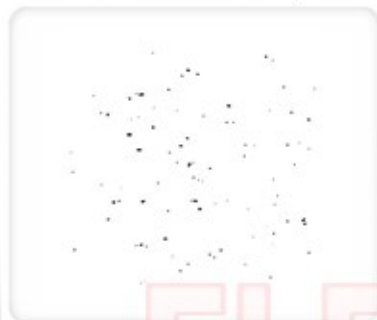
May 18, 2021

LAB GROWN DIAMOND

Certificate No: 311261213



Gemprint is the unique optical fingerprint for positive identification of your lab grown diamond. Register your lab grown diamond at [www.Gemprint.com](http://www.Gemprint.com) and receive insurance discounts up to 10%.



### Laser Inscription:

The illustration depicts enlarged and approximate appearances of the inscriptions. Girdle laser inscribed "LAB GROWN" and "LG311261213"



GEM CERTIFICATION & ASSURANCE LAB  
ISO 17025 ACCREDITED FORENSIC LABORATORY

580 Fifth Avenue LL-05, NY, NY 10036 USA • T 212.869.8985 • [GCALUSA.com](http://GCALUSA.com)

ISO/IEC 17025 2017  
ANAB L2177-1

Accredited Testing Lab



## The 4Cs Grading Analysis

GCAL 311261213

LAB GROWN DIAMOND\*

Carat Weight:

1.55

Cut:

Excellent

Shape:

Cushion Brilliant

Measurements:

7.53x6.28x4.32mm

Optical Brilliance:

Excellent

Optical Symmetry:

Very Good

Polish:

Excellent

External Symmetry:

Very Good

Girdle Thickness:

Thin-Sl.Thick

Culet Size:

None

Color:

E

Fluorescence:

None

Clarity:

S11

Identifying Characteristic(s):

Crystal/Feathers/Needles

Characteristic Location(s):

Table/Upper Girdle-Girdle, Girdle/

Table, Bezel, Upper Girdle

\*Comments: This man-made diamond was grown in a laboratory by the HPHT method, and has the same chemical, physical, and optical properties as an earth mined diamond.

### Photomicrographs:

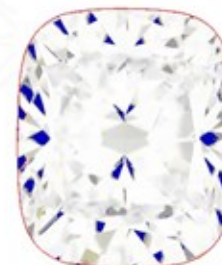
Actual images of the crown (top) and pavilion (bottom) of this diamond photographed at magnifications up to 10x.



## Light Performance Profile

### Optical Brilliance Analysis:

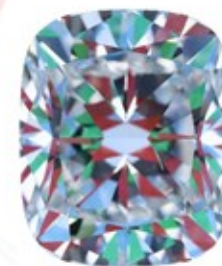
Brilliance is the overall return of light to the viewer. The brilliance image is a representation of (a) white areas of light return, or brilliance, and (b) dark-blue areas of light loss.



Optical Brilliance  
Excellent

### Optical Symmetry Analysis:

The colored areas of the symmetry image are indications of light handling ability, giving a visual representation of proportions and facet alignment.



Optical Symmetry  
Very Good

### Proportion Diagram:

The proportion diagram illustrates the actual dimensions as recorded by optical scanning technology.

